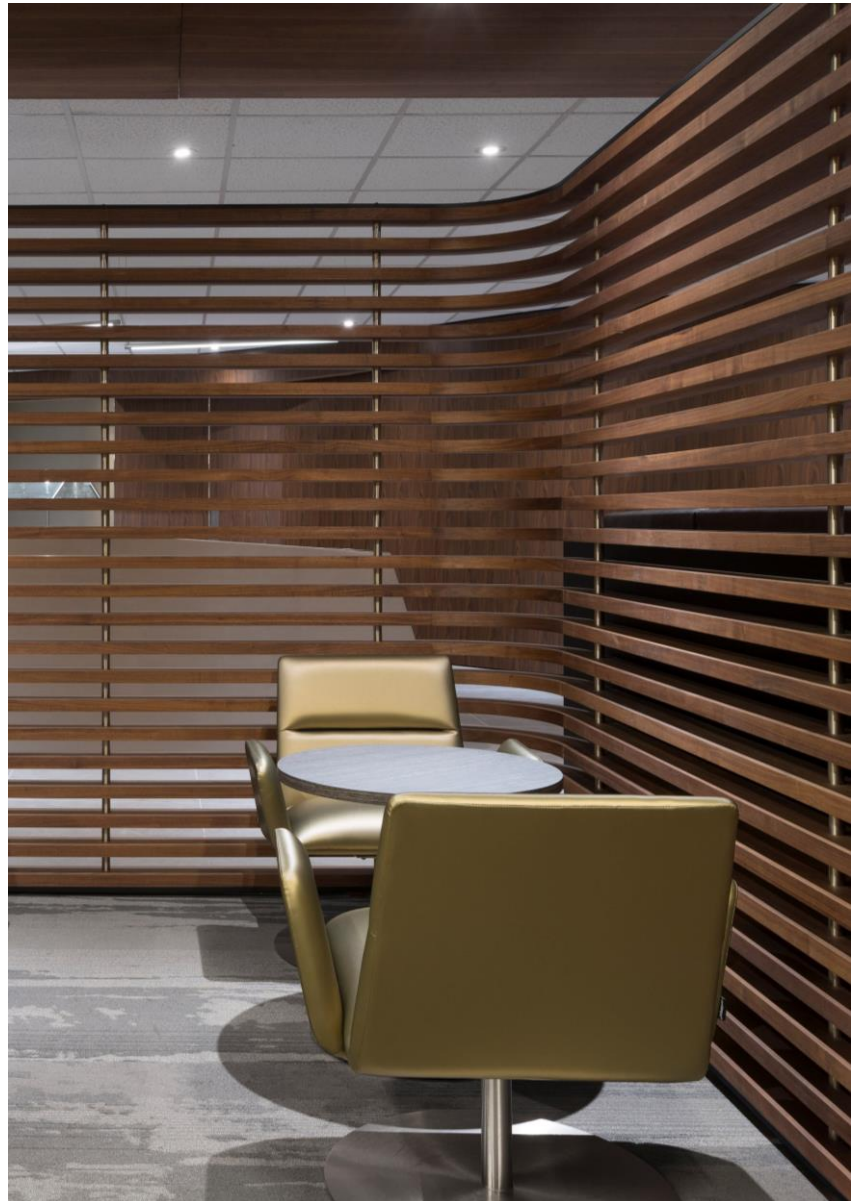


# ABOUT

CII and their alliance with supporting factories has been in the residential and commercial manufacturing industry for 20 years. During this time, our reputation among builders and designers alike has been to provide exceptional quality in high-end residential and commercial projects. Our team of highly dedicated project managers work closely with homeowners, designers, architects, and builders to provide their expertise and bring our client's projects to life.

We offer manufacturing services from concept to completion. Residential projects range anywhere from traditional kitchens and bathrooms to ultra-contemporary wine cellars, libraries, home theatres and offices. Our commercial division specializes in hotels, restaurants/bars, retail spaces, corporate and medical offices. Our services include stone, solid surface, glass, acrylic, upholstery and metal work.

CII has a rich European background, combining old-world craftsmanship with truly unique and innovative designs. Our fine manufacturing techniques offer signature artistry, modern functionality, and the use of quality materials. Our focus on service and customer satisfaction along with our talented, highly skilled craftsmen has all contributed to the success of the company.





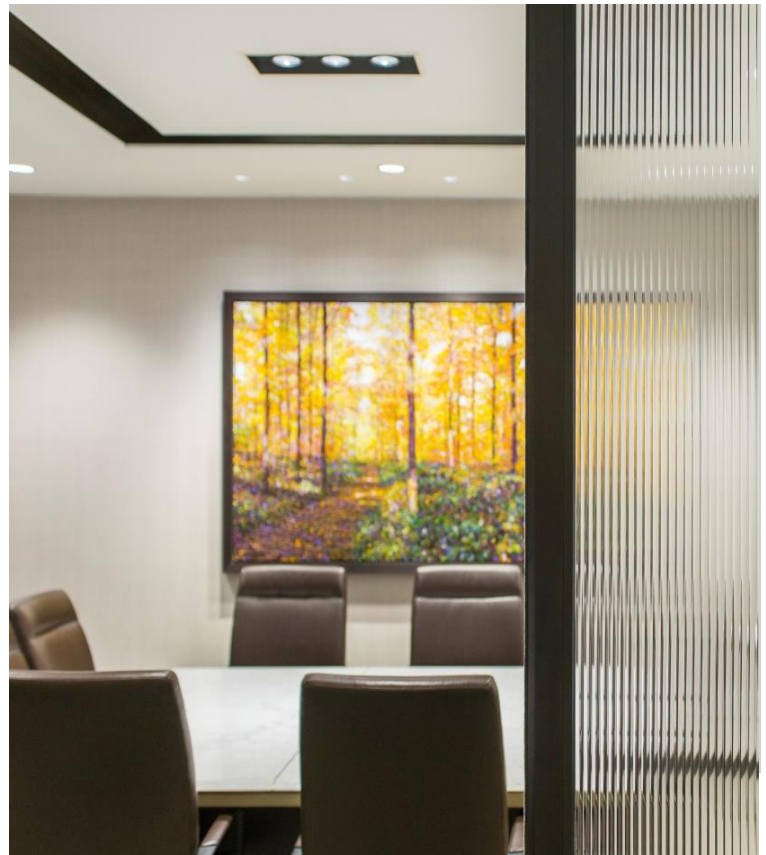
# OUR PRODUCT ADVANTAGE

Our 35,000 square foot manufacturing facility is based in Mississauga, Ontario, Canada. In combination with our skilled cabinetmakers and carpenters, we operate with some of the newest automated equipment on the market for the millwork industry, including CNC machines, edgebanding machines, and automated sanding and paintlines.

We service clients across Canada and internationally, most recently working in Florida, New York, Turks and Caicos and Bermuda.

Recent projects include:

- Fairmont Royal York – Gold Floors, Toronto ON
- Kimpton Saint George Hotel, Toronto ON
- The Omni King Edward Hotel – Crystal Ballroom, Toronto ON
- Sun Peaks Grand Hotel, Sun Peaks BC
- Fairmont Banff Springs, Banff AB
- The Loren Hotel, Pink Beach Bermuda





We know the importance of quality work and products that are built to last. This is why we have exceeded expectations since expanding internationally. We specialize in manufacturing products that will stand up to high humidity climates.

Products include, but are not limited to:

- Marine grade plywood
- Medex – moisture resistance MDF
- Milesi Polyurethane coatings
- PUR edgebanding glue
- Corrosion resistant metals

We are very familiar with packing and shipping for long distance. For installation, we provide our clients the option of using their own local trades or sending our professional installers.

# THE LOREN HOTEL

- **LOCATION**  
*Pink Beach, Bermuda*
- **DESIGNER**  
*Fleur-de-lis Interior Design Inc*





- Custom headboard, night tables, dressers and mirrors
- Fireplace surround
- Kitchen cabinetry and louvered doors
- Note: For custom furniture, we can manufacture in our facility or, to save on cost, we can manufacture with our partner factory in Asia.





## **ANNEX HOTEL**

- **LOCATION**  
*Toronto, ON, Canada*
- **DESIGNER**  
*Studio AC*



- Workbench with stone top and lower credenza
- Platform beds and headboards
- Dry bar cabinet to conceal mini fridge
- Finishes:
  - 3/4" prefinished Garnica plywood







## ***THE OMNI KING EDWARD HOTEL***

- **LOCATION**  
*Toronto, ON, Canada*
- **DESIGNER**  
*Moncur Design Associates Inc*

We had the honour of working on the Crystal Ballroom restoration project after it had been closed for 38 years.

Our scope included supplying and installing new mouldings that were custom made to match the original design, new radiator covers and cladded window frames.

It was a remarkable transformation!

Designated Contact: Joshua Goldstein  
Contact Number: 305.763.2876  
E-mail: [joshua@collectionii.com](mailto:joshua@collectionii.com)



- Full height wood wall paneling
- Stone bases for decorative sculptures
- Decorative mouldings



# COLETTE GRAND CAFÉ

- **LOCATION**  
*Toronto, ON, Canada*
- **DESIGNER**  
*Audax Architecture Inc*







- Painted archways & custom oak cabinetry

- Pastry counter millwork
- Bar counter millwork and metal/glass liquor display





# SPENCER'S AT THE WATERFRONT

- **LOCATION**  
*Burlington, ON, Canada*
- **DESIGNER**  
*Audax Architecture Inc*







- Metal room partitions
- Custom banquettes and upholstery
- Wall paneling
- Caesarstone countertops
- Finishes:
  - Metal, plated in brass finish
  - Vinyl upholstery fabric

Designated Contact: Joshua Goldstein  
Contact Number: 305.763.2876  
E-mail: joshua@collectionii.com





## **HOPSON GRACE**

- **LOCATION**  
*Toronto, ON, Canada*
- **DESIGNER**  
*Burdfiek*

Designated Contact: Joshua Goldstein  
Contact Number: 305.763.2876  
E-mail: [joshua@collectionii.com](mailto:joshua@collectionii.com)



- Custom Stone Tables
- Open shelving unit with LED lighting
- Finishes:
  - Carrara marble
  - Oak veneer
  - Milesi Polyurethane paint







## **CARNABYS BESPOKE JEWELLERY**

- **LOCATION**  
*Toronto, ON, Canada*
- **DESIGNER**  
*Johnson Chou Inc*



Designated Contact: Joshua Goldstein  
Contact Number: 305.763.2876  
E-mail: [joshua@collectionii.com](mailto:joshua@collectionii.com)





- Suspended light box
- Jewellery and window display cases
- Wall paneling to disguise additional storage
- Finishes:
  - Octolux Gold Laminate
  - FENIX NanoTech laminate
  - Powder coated metal



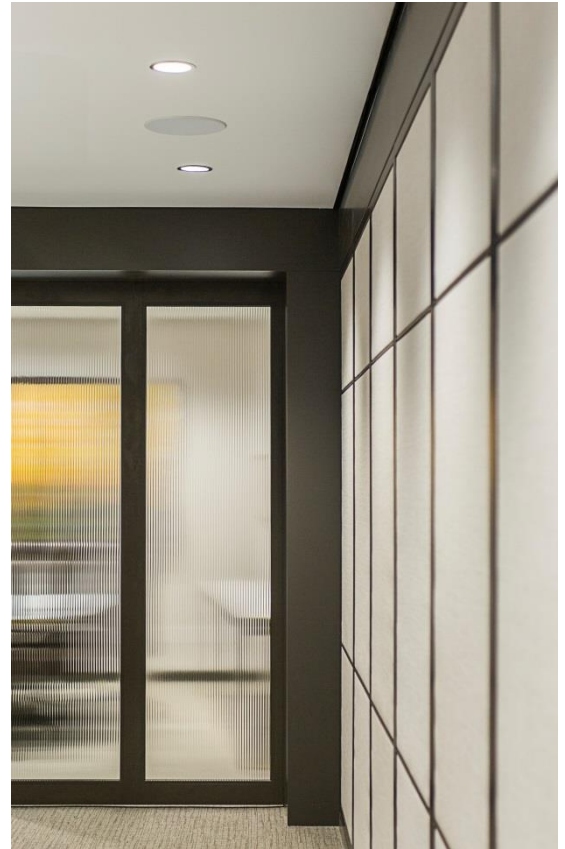
Designated Contact: Joshua Goldstein  
Contact Number: 305.763.2876  
E-mail: joshua@collectionii.com

# COLLIERS INTERNATIONAL HEADQUARTERS

- **LOCATION**  
*Toronto, ON, Canada*
- **DESIGNER**  
*Audax Architecture Inc*







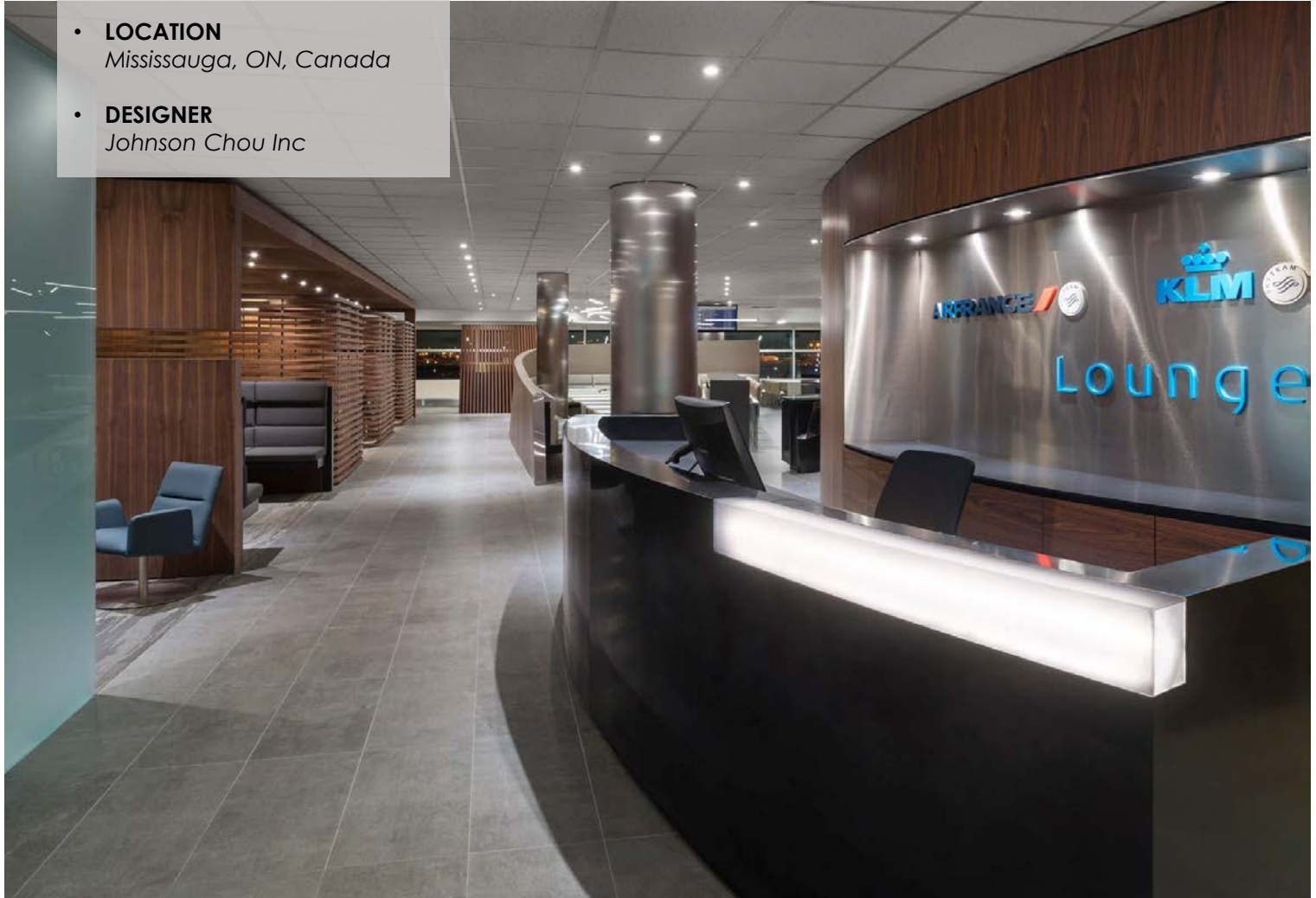
- Stone and wood wall paneling
- Reception desk with plated metal rod detail
- Console tables and boardroom tables
- Ceiling paneling
- Upholstered wall paneling
- Finishes:
  - Grey Stone, honed
  - Metal, plated in Antique Brass finish
  - Macassar Ebony, stained

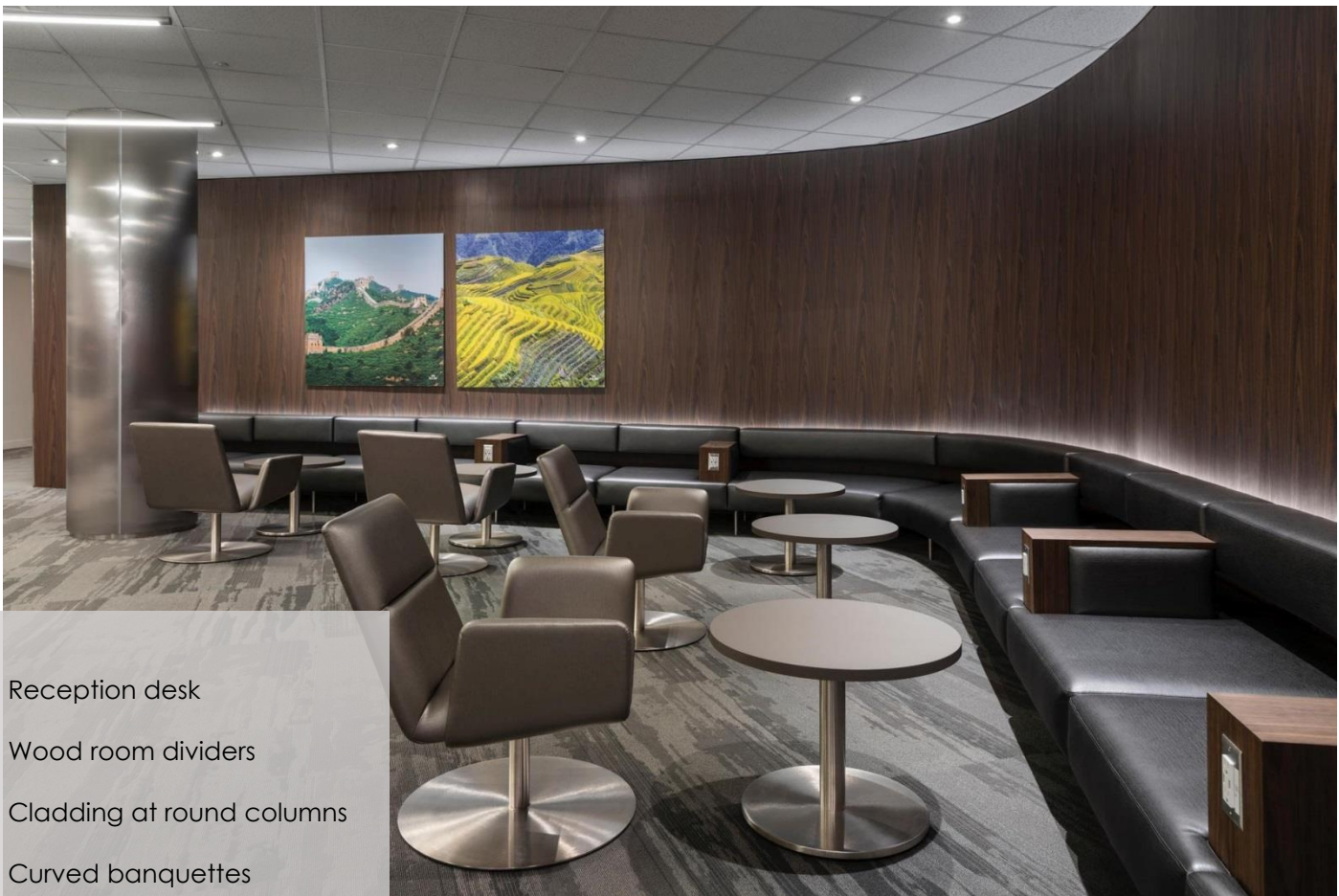
Designated Contact: Joshua Goldstein  
Contact Number: 305.763.2876  
E-mail: [joshua@collectionii.com](mailto:joshua@collectionii.com)



**AIR FRANCE  
- KLM LOUNGE  
TORONTO PEARSON  
INTERNATIONAL AIRPORT**

- **LOCATION**  
*Mississauga, ON, Canada*
- **DESIGNER**  
*Johnson Chou Inc*





- Reception desk
- Wood room dividers
- Cladding at round columns
- Curved banquettes

- Finishes:
  - Black Corian
  - Flat Cut Walnut, stained

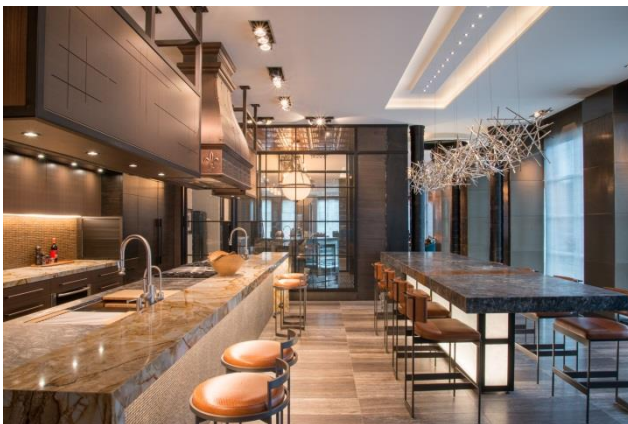






## **UPTOWN YORKVILLE**

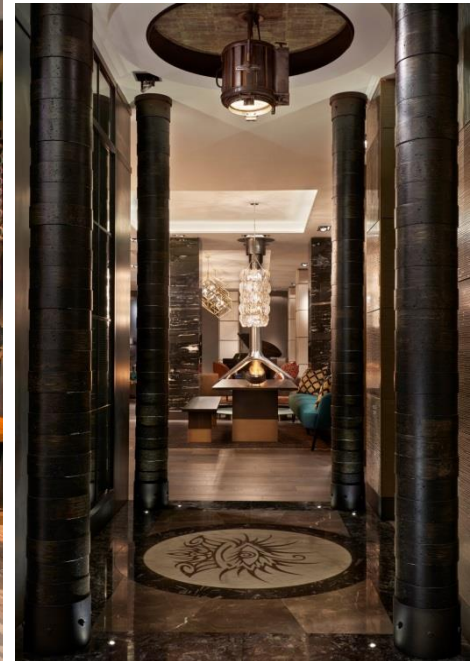
- **LOCATION**  
*Toronto, ON, Canada*
- **DESIGNER**  
*Fleur-de-lis Interior Design Inc*







- Kitchen, including countertops
- Master Walk-in Closet with quarter-figured Sycamore wood
- Guestroom platform bed, headboard, night tables and wall paneling
- Library wall paneling, bookcases and cladding of elevator door in copper laminate
- Solid wood columns





## **AVENUE RD**

- **LOCATION**  
*Toronto, ON, Canada*
- **DESIGNER**  
*Fleur-de-lis Interior Design Inc*





- Leather and wood veneer wall paneling
- Floating vanity, mirror and stone at Master Bath
- Walk-in Closet
- Cladding at TV column
- Stone countertops
- Finishes:
  - Rift cut Ash, stained
  - Lucido Castello prefinished material





## WEST MAPLE CREEK

- **LOCATION**  
*Hamilton, ON, Canada*
- **DESIGNER**  
*Regina Sturrock Design Inc*







- Kitchen cabinetry including custom canopy for hood and stone countertops and backsplash
- His and her vanities
- Finishes:
  - Milesi Polyurethane paint
  - Caesarstone Calacatta Nuvo
  - White River custom mouldings



## **BLUFFER'S PARK**

- **LOCATION**  
*Toronto, ON, Canada*
- **Designer**  
*Marquis Cabinets*



- Frameless kitchen cabinetry
- Built-in lower cabinets at fireplace
- Mudroom cabinetry and built-in bench
- Finishes:
  - Milesi Polyurethane paint





## ***KING'S COURT***

- **LOCATION**  
*Mississauga, ON, Canada*



- Custom kitchen cabinetry, designed for accessibility
- Walk-in pantry
- Finishes:
  - Milesi Polyurethane paint



# INDUSTRY AFFILIATIONS & CLIENTS



J O H N S O N   C H O U



Fleur-de-lis  
interior design inc.

taboo  
MUSKOKA

R E I S S

PARK HYATT®

Gardiner  
Museum



THE  
LOREN  
AT PINK BEACH

C O P A  
C A B A N A



TORONTO  
PEARSON



TORCON  
PLAN | MANAGE | CONSTRUCT



OMNI® HOTELS  
& RESORTS



HGTV



SUN PEAKS  
GRAND  
HOTEL & CONFERENCE CENTRE

Tommy Bahama®



FOUR SEASONS



Designated Contact: Joshua Goldstein

Contact Number: 305.763.2876

E-mail: joshua@collectionii.com